

FLAWLESS BRACKET PLACEMENT

Next, your braces are placed on the models of your teeth, and are positioned utilizing the reference lines as a target for bracket placement.

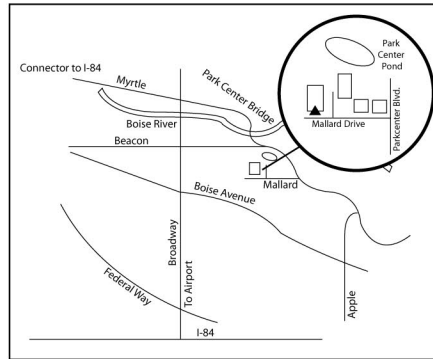


TRANSFER OF BRACKETS TO YOUR TEETH

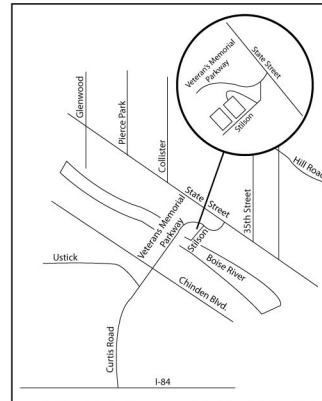
After the braces are placed on the models of your teeth, a custom transfer tray is fabricated that envelops the brackets. This transfer tray looks somewhat like a mouth guard, and is used to remove the brackets from the model and transfer them to the teeth. This tray maintains the spatial orientation of each bracket. Ultimately, your brackets are bonded to the teeth using this custom tray in a simultaneous process that places your braces in one quick, and intelligent step.



TWO LOCATIONS TO SERVE YOU



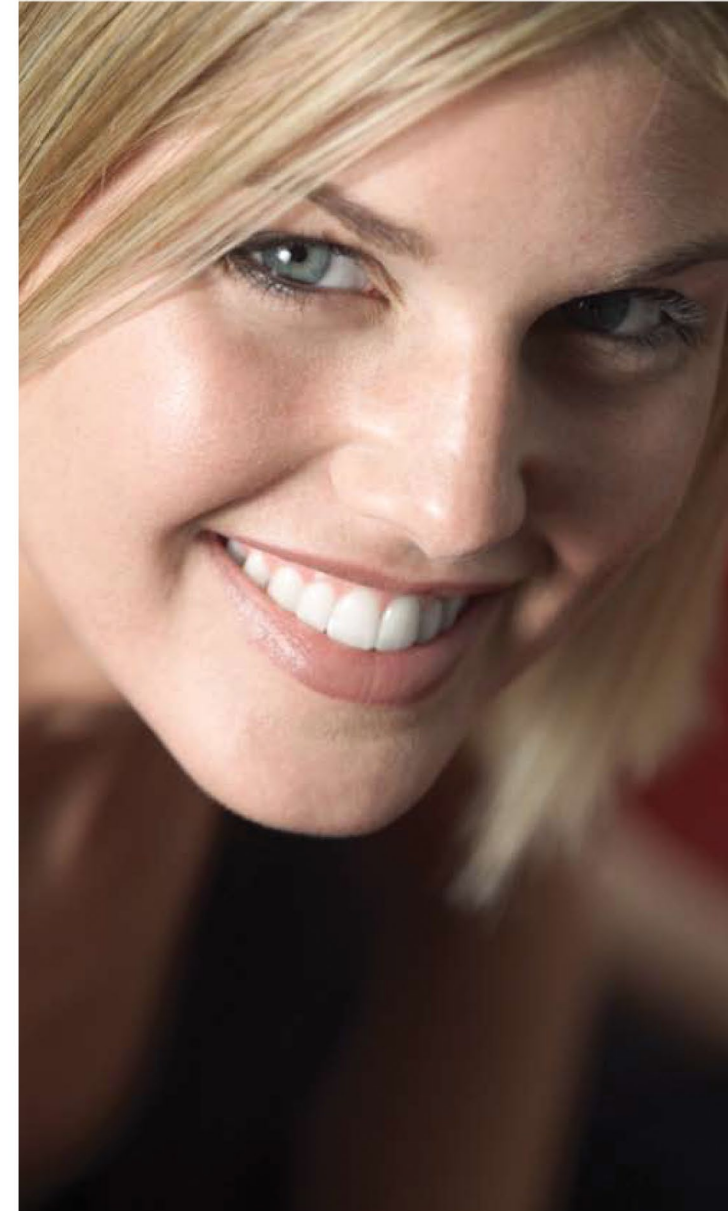
Creekside Center
136 East Mallard Drive
Boise, ID 83706
(208) 342-0212



Parkway Professional Center
813 North Stilson Road, Suite D
Boise, ID 83703
(208) 342-0678

**REMEMBER, WITH DR. KALANGE,
BRACES ARE SOMETHING
TO SMILE ABOUT!**

iBONDING®
A REVOLUTIONARY METHOD
FOR PLACING BRACES



WE HAVE YOU COVERED!

Dr. Kalange has long been recognized throughout the United States as a leader in orthodontics for his use of a remarkable technique called “indirect bonding.” Are you excited about getting braces? Getting your braces on is the first step in achieving a million dollar smile! You may have heard that getting your braces on takes a long time, is uncomfortable, and requires you to have your mouth open for what feels like forever. Have no fear! At our office, we use a technique called “**iBonding**” that makes putting your braces on faster and easier, and makes your treatment more comfortable, more convenient, and more efficient than traditional methods.

How do we do it? First of all, your braces are placed in one step and they are bonded to your teeth all at once. Secondly, we use a customized prescription for placement of your braces that is unique to your teeth and your treatment plan.

WE DO THE MATH!

Our technology uses a series of vertical and horizontal reference lines, and extremely accurate measurements of the teeth and the dental arches for placement of your braces. A state of the art laboratory process is involved that creates a customized transfer tray to place your braces comfortably with astounding precision.



› SHORTER TREATMENT TIME

Advanced geometry and mathematical analysis determines the precise position of each brace so that every tooth in your mouth takes the fastest route to its final position. This translates to quicker and more efficient treatment, and a higher quality end result when compared to the traditional methods.

› FEWER OFFICE VISITS

Our precision bracket placement technique has the final result in mind before the braces are even placed on your teeth. As a result, your treatment progresses “automatically” and requires fewer adjustments than the traditional methods. This means less trips to the office!

› MORE COMFORTABLE

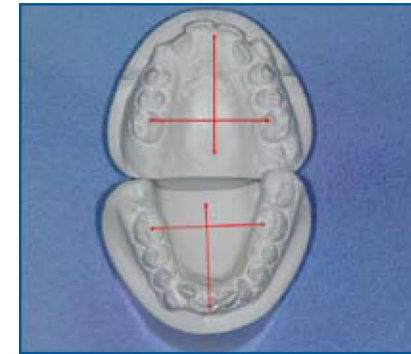
Traditional methods use separators which are wedged between the teeth before metal bands are cemented on the back teeth. This process is one of the most uncomfortable aspects of traditional treatment. In “**iBonding**” we eliminate the use of separators and bands on the back teeth, and bond the braces in a simultaneous application process using a customized transfer tray. All of this results in more comfortable treatment.

HOW DOES IT WORK?

This technology uses precision instruments, and accurate measurements combined with advanced knowledge of tooth form to calculate the most ideal position for your braces. We take each and every tooth into account when creating these accurate measurements.

› ACCURATE MODELS OF THE MOUTH

Impressions of the mouth are obtained, and models of the teeth are prepared from these accurate impressions. These models are an exact duplicate of the shape of your mouth, and the position of your teeth.



› PRECISION MEASUREMENTS

A series of vertical and horizontal lines are placed on the models of your teeth using sophisticated metrics and very accurate instruments. These lines create the landmarks on which your brackets are placed.

